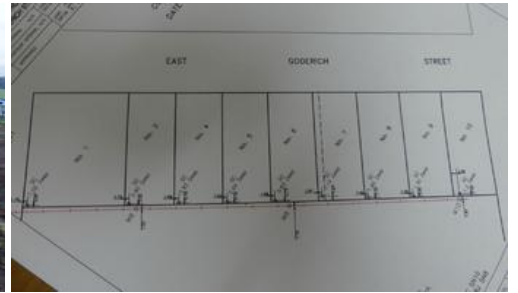




## Lot 8-10 East Goderich Street, Deloraine



### INDUSTRIAL LAND

Just released Industrial land available in Deloraine in an ideal location, close proximity to the Town centre and many other business's close by. Choice of 8 vacant blocks with flexible sizes from approx 1043m<sup>2</sup> to 1100m<sup>2</sup> and above if necessary.

Please note that block sizes are also able to be adapted to suit particular situations. Land and warehouse/ workshop opportunities available also. Zoned Light Industrial, all services available and situated above the flood zone.

Enquire now to have first choice of this exciting industrial subdivision.

The above information provided has been furnished to us by the vendor/s. We have not verified whether or not that information is accurate and do not have any belief in one way or the other in its accuracy. We do not accept any responsibility to any person for its accuracy and do no more than pass it on. All interested parties should make and rely upon their own inquiries in order to determine whether or not this information is in fact accurate.

**Price** Negotiations Between \$59,000 to \$69,000

**Property Type** residential

**Property ID** 722

**Land Area** 1,043 m<sup>2</sup>

#### Agent Details

Virginia Youd - 0417623206

#### Office Details

Deloraine  
47 Emu Bay Rd Deloraine TAS 7304  
Australia  
0363622255